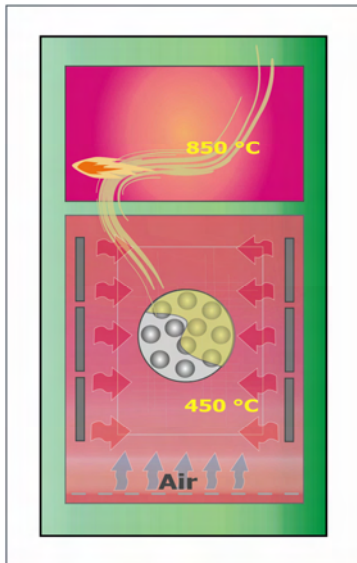


ARENA DIABLO Heated Atmosphere Reactor



Cleaning of Metal Parts and Tools



OPERATION

In a simple cleaning cycle, the reactor can be preheated to a chosen 'stand by temperature (for example 400 °C) before the contaminated parts can be loaded.

The loading frame with removable parts carrier slides out from the unit and it is accessible from different sides to load the parts.

After manually closing the door, the 'cycle start' will keep the door safely closed while a cleaning cycle with temperature and atmosphere control is run automatically.

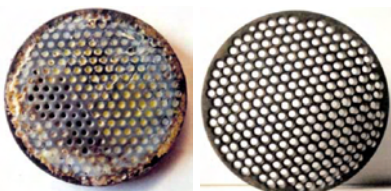
When the cycle has come to an end, the unit resumes stand-by operation when selected and the parts can be unloaded.

More complex multipoint cleaning cycles can be programmed to suit specific applications.

PROCESS

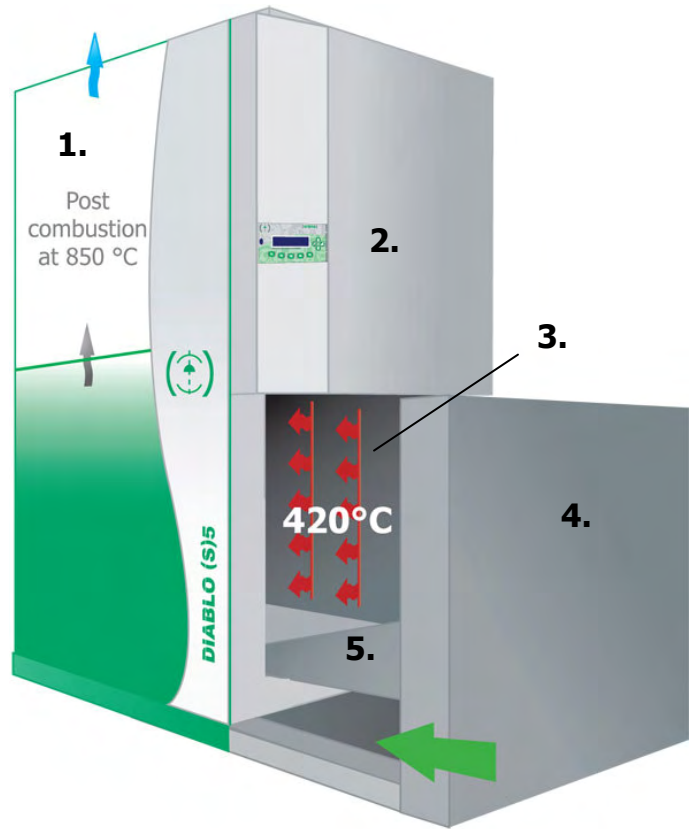
DIABLO systems are based on the "heated atmosphere" cleaning process, and mainly consist of a Cleaning Reactor (bottom part) and a post combustion volume (top section).

The heating as well as the atmosphere inside the Cleaning Reactor are accurately controlled by an integrated up to date programmed logic controller for fast and thorough cleaning.



Description of Diablo Systems:

1. Integrated Postcombustion
2. Safety and reactor control system
3. Reactor with adjustable temperature
4. Pneumatic operated door with removable supports for the parts
5. Integrated collection tray for melted organic material



DIABLO systems		S 3	S 5
Depth	[in]	11.8	19.6
Width	[in]	11.8	19.6
Height	[in]	17.7	29.5
Reactor volume	[ft ³]	1.4	7.0
Thermal rating	[kWth]	1	4

Metal weight	[lb./batch]	88	352
Plastics (PE-PP)	[lb./batch]	1.1	3.3

A	[ft.]	2.3	3.6
B	[ft.]	4.6	7.2
C	[ft.]	4.2	6.2
D	[ft.]	2.3	2.9
E	[ft.]	2.6	3.9

